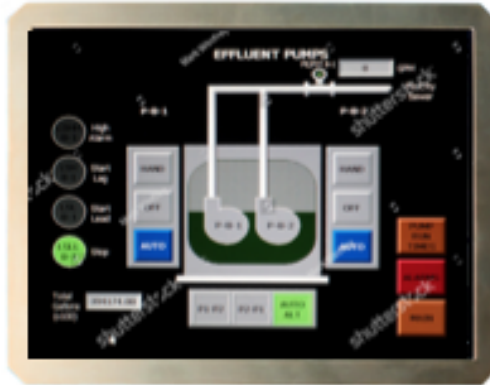




IDC-84RDA-01 (UNDER DEVELOPMENT)

8.4" XGA RUGGED DISPLAY ASSEMBLY



The Display Head Assembly (DHA) contains:

- 6.7" (w) x 5.0" (h) inch LCD
- AR Protective Glass
- Edge LED Backlight
- Backlight Controller Board
- 6/8-bit Digital RGB Signals
- Frame Designed for Harsh Environments
- Extended Temperature Range
- Full Sunlight Readability
- Wide Viewing Angle
- High Contrast
- Standard Rugged (~25mm) Housing Design
- Wide Dimming Range
- Touch Panel (Optional)
- EMI Shield (Optional)
- Heater (Optional)
- Night Vision Filter (Optional)

General Characteristics	
Display Area	132.48 mm (w) x 99.36 mm (h) [5.2 in (w) x 3.9 in (h)]
Diagonal Size of Display	213.12 mm [8.4 in]
Drive System	a-Si TFT Active Matrix
Display Color	262,144 or 16,777,216 colors (6 or 8 bits)
Pixel Resolution	1024 (H) x 768 (V)
Sub-Pixel Resolution	3,072 (H) x 768 (V)
Pixel Configuration	R G B Stripe (Red, Green, Blue stripe)

www.idclcd.com (770) 886-3960

1115 Alpha Drive, Alpharetta, GA 30004